



**Manchester
Metropolitan
University**



**International
Undergraduate and
Postgraduate Guide
2025**

Contents

Welcome to Manchester	
Metropolitan University	4
Manchester: make it yours	6
An international city	8
A city made for you	11
Discover your campus	12
Your learning environment	14
World-class facilities	16
Your Students' Union	18
Accommodation options	20
Fees and scholarships	22
Managing your finances	23
Cost of living	24
Support for you	26
Pre-sessional English courses	28
Doctoral research studies	30
Your career starts here	34
Supporting your career	36
Our international alumni	38
Faculty of Arts and Humanities	40
Faculty of Business and Law	42
Faculty of Health and Education	44
Faculty of Science and Engineering	46
Institute of Sport	48
Our courses	50
Undergraduate courses	51
Postgraduate taught courses	57
Courses with a January 2025 start date	62
How to apply	64
Understanding your offer	66
Applying for accommodation	66
Useful information and contacts	68
Manchester: connected to the world	70



UK's best city
Manchester is the
UK's third-best
student city.*



Sustainability
Proud to be a top
three sustainable
university since
2013.**



**Lifetime careers
advice**
Lifelong access to our
digital careers service
for all alumni of the
University.



Over 5,000
International
students from over
120 countries.

* QS Best Student Cities 2024

** People & Planet University League
2023/24

† REF 2021

‡ Academic year 2023/24

§ The scholarship amount
quoted relates to the 2025/26
academic year



Global links

Industry links with global companies, including adidas, IBM, Bentley Motors, L'Oréal, Warner Bros and Walt Disney.



Excellence

Our Business School holds the globally recognised trio of accreditations from EQUIS, AACSB and AMBA. This achievement places us among the very best business schools in the world.



Research

90% of our research impact is rated world-leading or internationally excellent.[†]



History and heritage

A history of education since 1824.



1,000,000

Over one million library books, journals and e-resources.[‡]



1,750

Academic teaching staff and professors.



Scholarships

A range of scholarships up to £3,500, plus prestigious Vice-Chancellor scholarships for exceptional international undergraduate students.[§]



£400M+

Investment in our facilities, buildings and public spaces.



WELCOME TO MANCHESTER METROPOLITAN UNIVERSITY

An introduction from our Vice-Chancellor

Thank you for your interest in Manchester Metropolitan University, an ambitious university with a proud heritage dating back to 1824.

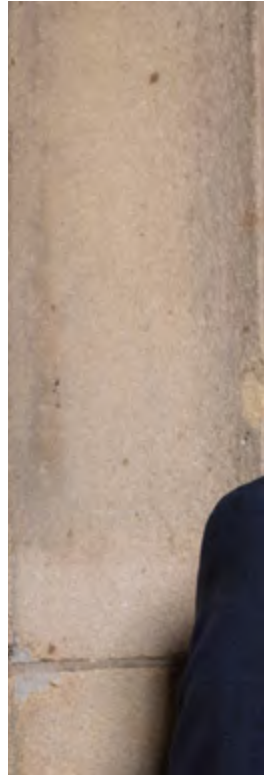
We are one of the largest universities in the UK, with more than 43,000 students, and are home to a diverse international population from over 120 different countries.

Our campus is located in the centre of Manchester, an exciting and vibrant city with a history shaped by industry, culture and innovation. The education we provide seeks to echo the city's energy, and I believe that students with ambition and a passion to succeed will find the best location in which to study.

We have invested heavily in creating a campus that inspires our students, with modern facilities and an environmentally conscious approach. For more than a decade, we have been in the top three of the People & Planet University League, which assesses UK universities for their environmental and ethical performance.

You will also benefit from our £400 million investment programme to enhance our teaching and research facilities. This includes the Grosvenor East building for the Faculty of Arts and Humanities, the School of Digital Arts, the Institute of Sport, and our new Dalton building for the Faculty of Science and Engineering.

We have an exciting future ahead of us. We have been rated as Gold under the Teaching Excellence Framework (TEF 2023), meaning that our undergraduate student experience and student outcomes are typically outstanding. Moreover, we are one of the UK's top 40 universities for research power, according to the latest assessment of research excellence, the Research Excellence Framework (REF 2021).





“Students with ambition and a passion to succeed will find the best location in which to study.”

This confirms our commitment to supporting quality research and delivering outstanding undergraduate and postgraduate teaching.

The world is changing rapidly, sometimes unpredictably. More than ever, we believe a university education is fundamental in helping to shape a better future. Here at Manchester Metropolitan, we are unwavering in our commitment to providing a high-quality education and experience that places your wellbeing and success at the heart of everything we do.

Choosing to study overseas is a life-changing decision. At Manchester Metropolitan, you can rely on our support and experience from the moment you begin your student journey.

After you enrol, you will belong to a community that values the experiences and perspectives of a rich diversity of people, including international students. Your membership of our community will continue even after you have graduated, and as one of our global alumni you will be part of a network of high achievers across a range of disciplines.

We look forward to welcoming you to Manchester Metropolitan and helping you to achieve your potential.

Professor Malcolm Press CBE
Vice-Chancellor

MANCHESTER: MAKE IT YOURS

Manchester is a global city and has a diverse community of people from a range of countries and cultures. This has made it an ideal destination for students from around the world.

It is also a wonderful location for developing skills. Many people start their careers here, including scientists, engineers, health professionals and business leaders. It is home to large corporate companies, including Google, Siemens, adidas and more, and has a growing digital and media sector with production companies, creative agencies and national broadcasters.

The city of Manchester is also an amazing place when it comes to achieving your dreams, pursuing your passions and showcasing your creativity as you will be surrounded by art, music and culture. Join one of the largest, most vibrant student communities in Europe* and make this city yours.

“One of my main reasons for studying at Manchester Met was the city itself. I really loved how diverse and student focused it is. It looked like a city full of life.”

Isabel
BSc Human Biosciences
Romania





AN INTERNATIONAL CITY

From food and drink to international art and music events – you will find Manchester is full of the things you love. Here, you will gain much more than an education – you will also create lifelong memories.



“Studying in Manchester has given me the opportunity to interact with students from a diverse cultures and backgrounds.”

Taiwo
MSc Public
Administration
Nigeria



“Manchester as a city is so welcoming that it will feel like home. It is such a vibrant and happening city.”

Soumilee
BSc (Hons) Sports
Business Management
India



Sport

Sportcity, Manchester's premier sports and entertainment destination, features world-class stadiums, iconic sports venues, and a hub of athletic excellence.*



Student city

Manchester is in the world's top 30 best student cities.**



International Festival

Manchester's international arts festival is staged every two years.



Student life

More than 100,000 students study at universities in Greater Manchester.†



Chinatown

Second largest Chinatown in Britain and third largest in Europe.



Great food

Restaurants to suit all budgets and tastes – from Mexican antojitos to African stews.

* Visit Manchester 2024

** QS Best Student Cities 2024

† Complete University Guide 2023



The Manchester Bee

The worker bee is a well-known symbol of Manchester. While it originates from the city's industrial past, today the bee stands for Manchester's pride, unity and identity.





A CITY MADE FOR YOU

Manchester is one of Europe's great cities with a unique character.

It has two of the world's biggest football clubs and hosts a variety of sporting events, including basketball, gymnastics, swimming, taekwondo, cycling and squash.

The city also has a famous history, as England's first free public library opened in Manchester in 1852. Scientist John Dalton developed his pioneering atomic theory here in 1803.

Manchester's great history can also be found in its many museums, and in its architecture that ranges from medieval to more modern designs. Known for its world-leading innovation and creativity, Manchester continues to thrive in everything from science and industry to arts and media.

Manchester is perfectly located for those who love nature and outdoor activities. The Peak District National Park – only a short train ride away – offers fantastic hiking and mountain biking opportunities.

These qualities make it an ideal home for key media organisations such as the BBC and many art galleries, theatres, cinemas and music venues.

Manchester is truly a city of culture.

“Manchester is a very lively and open-minded city with people from all different backgrounds and nationalities and a lot of different things to do.”

Julia
BA Tourism Management
Germany



DISCOVER YOUR CAMPUS

BH	Bellhouse
	• School of English
BR	Brooks
	• Faculty of Health and Education
	• Student Hub
BS	Business School and Student Hub
	• Faculty of Business and Law
	• Counselling, Mental Health and Wellbeing
	• Student Hub
CA	Cavendish
	• Manchester Fashion Institute
CH	Chatham
	• Manchester School of Art
DA	School of Digital Arts (SODA)
GE	Grosvenor East
	• Humanities, Languages and Social Science
	• Manchester Poetry Library
	• Manchester School of Art
GW	Grosvenor West
	• Manchester School of Art
	• The Holden Gallery
GM	Geoffrey Manton
	• Humanities, Languages and Social Science
	• Jobs Hub
IOS	Institute of Sport
	• Sport Studies
	• Movement and Physiology Labs

JDE	John Dalton East/Central
	• Faculty of Science and Engineering
LB	Lowry Building
	• Manchester School of Art
LIB	Library
MTC	Manchester Technology Centre
	• Manchester School of Architecture
OXS	70 Oxford Street
	• School of Art
RB	Righton
	• Manchester Fashion Institute
SB	Sandra Burslem
	• Manchester Law School
UN	Students' Union

Key

-  Railway station
-  Accommodation
-  Food and drink
-  Library





FIRST STREET

FIRST STREET

WHITWORTH STREET WEST

Palace Theatre

WHITWORTH STREET

OXFORD ROAD



International Anthony Burgess Foundation

HULME STREET

CHARLES STREET

Circle Square

HULME STREET

LOWER CHATHAM ST

LOWER ORMOND ST

CHESTER STREET

CHESTER STREET

BRANCASTER ROAD

JDE

LIB

MTC

Hatch

MANCUNIAN WAY A57 (M)

The Underpass

ALL SAINTS

SB

IOS

BS

Business School Square

BH

St. Augustine's Church



All Saints Park

OM

LOWER ORMOND STREET

CAVENDISH STREET

GROSVENOR STREET

CA

RB

GW

GE

LIB

OXFORD ROAD CORRIDOR

BOUNDARY STREET

UN

DA

LB

CH

GM

The Salutation Pub

Manchester Aquatics Centre

BOUNDARY STREET WEST

ROSAMOND STREET WEST

Royal Northern College of Music

BOOTH STREET WEST

BOOTH STREET EAST

University Green

YOUR LEARNING ENVIRONMENT

At Manchester Met, you will discover impressive lecture theatres, seminar rooms and study zones, as well as an incredible 24-hour library stocked with more than a million books, journals and e-resources.

Learning with us involves a blend of different approaches and different tools. Whether in lectures or tutorials, participating in busy group sessions or focusing on independent study, you will develop a valuable mix of practical skills and academic understanding. And, when it is time to take a break from your studies, you can always find a place to relax with friends.

Everything here is built around your studies, but it is also made to be sustainable. It is why we are proud to be one of the UK's most environmentally focused universities, according to the People and Planet University League.

A university is not just a place. It is also a community. From the teachers you will meet in the classroom and technicians working behind the scenes to the advisers at our Student Hubs, there is a wide range of experts and specialists all dedicated to helping you get the most from your time.

Find out more at mmu.ac.uk/study

“The facilities are one of the best things about the University. The University offers a wide range of individual and group study areas, and the Library is a great place to study and focus on your assignments.”

Rodrigo

BSc (Hons) Sports Business Management
El Salvador



The Lowry Building



School of Digital Arts



Anatomage Table in Brooks Building



Manchester Metropolitan Library



Moot courtroom

Virtual tour

Explore our world-class teaching and learning facilities online. See 360-degree photographs of our campus, view student accommodation videos and more.

Visit virtualexperience.mmu.ac.uk

WORLD-CLASS FACILITIES

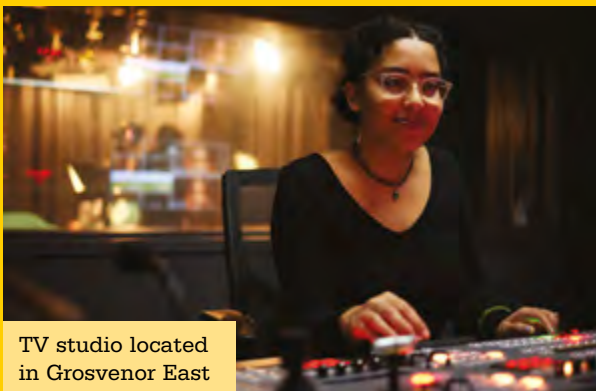
Everything you need for a great student experience is on the Manchester Met campus.

We have over £400 million planned to develop our facilities, and we have already invested in our Grosvenor building for the Faculty of Arts and Humanities, School of Digital Arts, Institute of Sport and the Dalton building, which is a redevelopment for the Faculty of Science and Engineering.

To find out more about our world-class campus, visit mmu.ac.uk/facilities

“The facilities provided by the University are excellent, offering the best equipment and resources. Overall, the learning experience is enriching and rewarding.”

Thomas
MSc Sports and Exercise Science
India



TV studio located in Grosvenor East



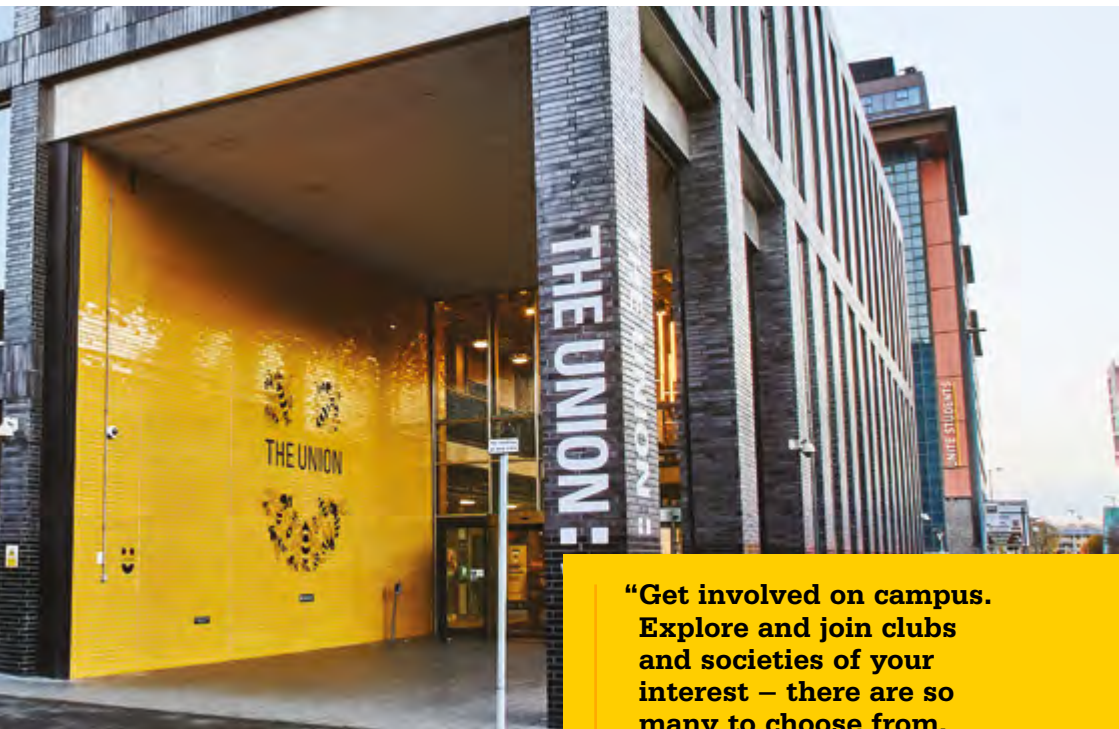
Manchester Technology Centre



Light engineering workshop
in the Dalton Building



MRI scanner located in
the Institute of Sport



“Get involved on campus. Explore and join clubs and societies of your interest – there are so many to choose from. This will help you meet people, make friends and build your support network.”

Monazza
MSc International Business
Management
Pakistan

YOUR STUDENTS' UNION



Every student at Manchester Met is automatically a member of the Students' Union. The Union exists to make sure you have the best

experience you can while you are at university. It is not just about focusing on academic results but helping you with everything in life while you study.

You will find many useful services at The Union. For example, you can join one of our many clubs and societies, buy something from the shop, get expert

advice and find out about campaigning and volunteering opportunities. You can also find a place to meet friends, have coffee, relax and attend a vast selection of events.

The Union is led by five Student Officers, who work full-time to represent Manchester Met students. They decide The Union's objectives, run campaigns and work with the University to make things better for students.

To discover more about the Students' Union, visit theunionmmu.org



Advice available

Experienced, trained staff in the Advice Centre are available to give guidance on a whole range of student-centred subjects. The service is free and independent from the University.

Getting involved: clubs and societies

Joining a society is a chance to follow your interests, get involved, try something new and meet others who share your passion. From architecture to rock music, there is a wide range of societies to choose from, all set up and run by students.

Getting active: sports and fitness

Playing sport and keeping active is a great way to enhance your university life.

MMU Sport has plenty to offer, with over 40 clubs ranging from social to competitive. You can also take advantage of free sport and fitness classes with the weekly Active Campus timetable – open to all students.



International Student Group

To help you settle into university life and meet other students, the International Student Group is here to represent and support you through your student experience. The group is a forum for international students to meet, discuss experiences and organise activities.

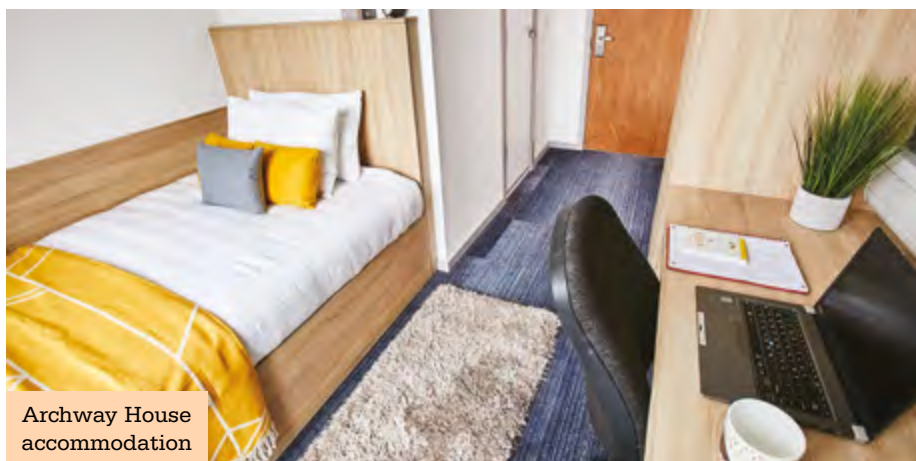
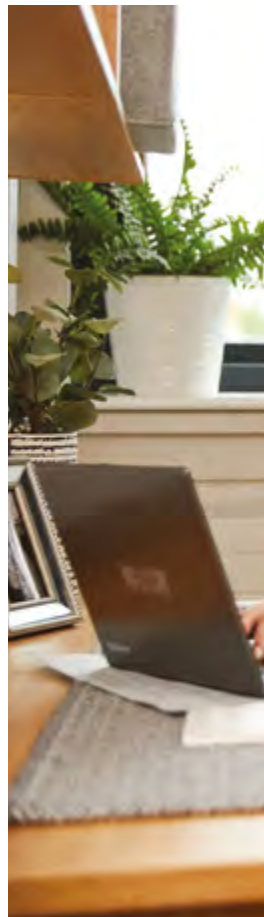
ACCOMMODATION OPTIONS

You can access a range of accommodation options while studying at Manchester Met, from en-suite rooms in shared flats to bedrooms with shared kitchens and bathrooms.

All rooms are close to where you will study, have excellent local transport links and plenty of local facilities, including shops, restaurants and cafes. Help and support is available 24 hours a day and is provided by our Residential Life and Security teams.

Undergraduate students are guaranteed a place in University-approved accommodation in their first year of study, provided you apply before our deadline.*

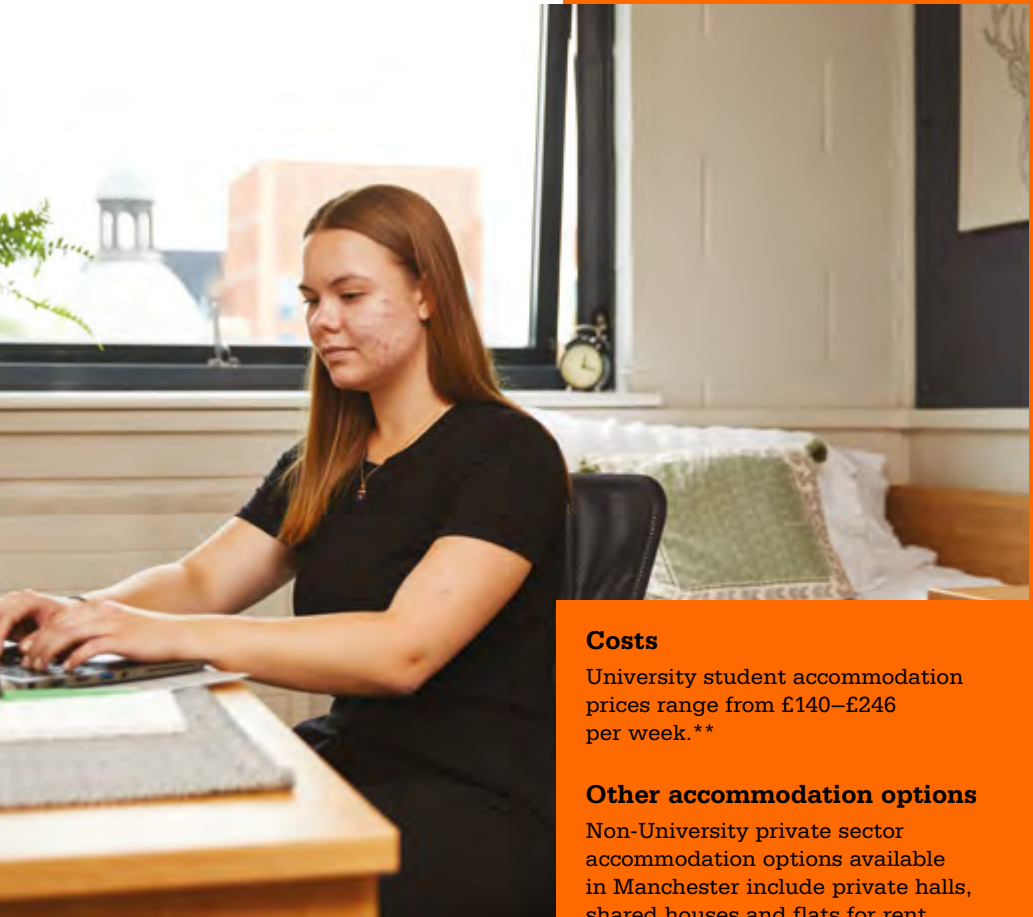
Take a look at the campus map on **pages 12–13** to see the different accommodation locations on campus. For more information including 360-degree photographs, videos and location maps, visit mmu.ac.uk/accommodation



Archway House accommodation



* Terms and conditions apply. The accommodation guarantee relates to the 2024/25 academic year and may change for the 2025/26 academic year. For further details, see mmu.ac.uk/accommodation



Costs

University student accommodation prices range from £140–£246 per week.**

Other accommodation options

Non-University private sector accommodation options available in Manchester include private halls, shared houses and flats for rent.

Prices vary depending on the option you choose, but there is accommodation to suit all budgets.

For further details, visit manchesterstudenthomes.com/accommodation

Our Student Living team

If you would like advice to help you find what suits you, our Student Living team can help you search for and secure accommodation.

Visit mmu.ac.uk/accommodation for more information.



** Prices are for the 2024/25 academic year and can be used as a guide for 2025/26, but they are likely to increase.

FEES AND SCHOLARSHIPS

Undergraduate tuition fees

International undergraduate students usually pay between £20,000 and £21,500 per year.*

Postgraduate tuition fees

For postgraduate taught masters courses, international students usually pay £20,000 to £22,500.*

Specialist courses may have higher fees.

The tuition fees remain the same for each year of study, providing you remain on the same course without a break in study and you complete your course in the normal timeframe.

The fees quoted do not include any charges for residential accommodation, travelling expenses or any other miscellaneous expenses that may be related to your programme of study.

Please see our online prospectus for up-to-date tuition fees and any additional costs associated with your course. mmu.ac.uk/study

Postgraduate research tuition fees

International postgraduate research students usually pay between £18,500 to £30,000 (full-time) and £9,250 to £15,000 (part-time).**

* The undergraduate and postgraduate taught fees quoted relate to the 2025/26 academic year and act as a guide. Some postgraduate business courses may have higher fees.

** The postgraduate research fees quoted relate to the 2024/25 academic year and may change for the 2025/26 academic year.

† The scholarships quoted relate to the 2025/26 academic year.

mmu.ac.uk/international/scholarships

Scholarships

Manchester Metropolitan University is committed to recognising high-achieving students, and we have a comprehensive range of scholarships available.† Terms and conditions apply.

Vice-Chancellor's International Regional Scholarships

Our prestigious Vice-Chancellor's scholarships are available to exceptional international undergraduate students who can demonstrate excellent academic merit and strong motivation to study at Manchester Met. Selected international regions only.

International undergraduate scholarships

We offer international undergraduate student scholarships worth £2,500 for every year of study for applicants who meet the eligibility criteria. The scholarship eligibility will be assessed upon application. You do not need to apply separately.

International postgraduate scholarships

We also provide international postgraduate scholarships worth £3,500 for applicants who meet the eligibility criteria. The scholarship eligibility will be assessed upon application. You do not need to apply separately.

Other university scholarships

International students are also eligible to apply for other funding options, including alumni discounts, sport scholarships and faculty-specific discounts.

mmu.ac.uk/international/scholarships

MANAGING YOUR FINANCES

We understand that managing your personal finances will be an important consideration when moving to the UK.

There are many ways to save money once you have arrived. Follow these useful points to help manage your budget.



1. Talk to other students

When you arrive in the UK, our students will be able to advise you on the places to shop, eat and socialise.



4. Exploring the UK

Students can get discounts of up to one third on coach fares with a Young Persons Coachcard and discounts of up to one third on train tickets with a 16–25 or 26–30 Railcard.



2. Shopping

Most supermarkets have a budget range of products, which can help to cut down the cost of your weekly groceries.



5. Student discounts

As a student in the UK, you are eligible to buy a National Union of Students (NUS) TOTUM card, which entitles you to discounts of around 10% at many retailers.



3. Local travel

If you travel the same route regularly, you may find it cheaper to buy an annual or term-time bus pass.



COST OF LIVING

Manchester is a great place to live and study. With so much to do, it is a good idea to plan your finances to make the most of your time here.

Your living costs include food, shopping and other expenses. The amount you spend depends on your lifestyle, so it can be difficult to calculate the precise living costs.

Also, you may have extra course costs, which can vary significantly depending on what you study. For further details, please check your specific course web pages.

To help you plan your spending, review the table on these pages to see examples of everyday living costs. Unless otherwise stated, these figures are from the UK bank NatWest's Student Living Index report, published in August 2023. Prices will likely increase for the academic year 2025/26.



Category	What the cost may be	Expect to pay*
Accommodation	A range of University student accommodation is available to suit all budgets. For non-university private accommodation, the cost depends on the standard of living, location, and how many people you live with.	£140 – £246 per week.**
Shopping	Includes food, toiletries, and other household items.	£109
Household bills	University accommodation rent includes broadband, water and energy. In private accommodation, they will likely cost extra.	£34
Mobile phone	As well as your standard contract, you may also pay for insurance.	£12
Clothes, shoes and accessories	Even if you arrive with all the clothes you need, there will likely be more to buy during the year.	£33

* Cost per month unless otherwise stated.

** Prices are for the 2024/25 academic year and can be used as a guide for 2025/26, but they are likely to increase.



Category	What the cost may be	Expect to pay*
Socialising	Manchester has many attractions, such as cinemas, theatres, galleries and music venues.	£32
Dining out	There are lots of places to eat on campus, as well as restaurants and takeaways across the region.	£28
Public transport	Manchester has great buses, trams and trains. Save money by buying season tickets.	£24
Trips	Manchester is near the centre of the UK, making it easy to travel to the country's cities and sights.	£30
Self-care and wellbeing	For your gym membership or hobbies.	£16
Home entertainment	Look for student deals to save money on music, TV and film streaming services.	£5

SUPPORT FOR YOU

Welcoming international students is important to us, and we have dedicated staff available to help you.

Take the first step on your new journey

Staff from our International Office regularly visit countries across the world to meet students and tell them all about life at the University and in Manchester. You can also meet us online at virtual events. For more information, visit mmu.ac.uk/study/international

Help when you need it

We fully understand that students may need a little extra help from time to time. That is why we are here for you when you need us. We offer support with your career, finances, wellbeing and learning.

Tools for learning

The use of digital tools for collaborative working has increased, so we deliver teaching and learning to help you prepare for the ways of working after you graduate. Our digital approach gives you the tools to support your studies on campus, from accessing resources to submitting assessments. We also provide an online learning resource, Moodle, which is available 24 hours a day.

For the latest information on course delivery and university life, please visit mmu.ac.uk/study

Study skills support

The Academic and Study Skills team offers support and advice on academic writing, numeracy, specific learning difficulties, study skills and assistive technologies. You can choose to access help through one-to-one appointments, short courses and workshops. To find out more, visit mmu.ac.uk/studyskills

Peer Assisted Learning scheme

There is an entire community of students you can turn to if you need some help. When it comes to your studies, the Peer Assisted Learning scheme (PAL) offers the chance to join others on your course in sessions led by a student from a higher year group to share knowledge, develop skills as a group and make some new friends. To find out more, visit mmu.ac.uk/pals

Peer guides

Our peer guides are current students who are there to welcome you to the Manchester Met community and help you settle in. They can answer your questions and share their experiences with you to guide you through your first year. You can chat live to a Peer Guide through the Vygo app. To find out more, visit mmu.ac.uk/pals

Finding your voice: English language support

Our Language Centre runs free English language workshops to support you during your time with us. These can improve your confidence in classes and





“The University has helped me through its dedicated support services. Whether it is assistance with visas and immigration, academic advice, or counselling, I have always known that help is just a phone call or email away.”

Haysley

BSc (Hons) Physiotherapy
Hong Kong

seminars, helping you both socially and academically. To find out more, visit mmu.ac.uk/languagecentre

Whatever you need, we are here

Our Student Hubs are the places to go for advice. They provide a comprehensive information service on all student-related matters and can refer you for specialist support on student living, studying and finance, as well as immigration.

Visit our Digital Student Hub to find answers to hundreds of frequently asked questions. If you cannot find what you are looking for, either submit an online enquiry, phone our helpline or go to one of the Student Hubs in our Business School or Brooks building to chat with a friendly adviser.

studenthub.mmu.ac.uk

Disability support

Our Disability Service provides dedicated support for students with a disability, health condition or specific learning difficulty such as dyslexia or dyspraxia. They give information on the

resources available within the University and from external agencies to help you during your studies.

mmu.ac.uk/disabilityservice

Chaplaincy

Our chaplains provide support to students of faith but also of no faith, including spiritual help, confidential advice, prayer and study, and information on local places of worship.

mmu.ac.uk/chaplains

Maintaining your wellbeing

It is important that you look after yourself, and we can offer professional help – from nutrition, sport and fitness through to your mental wellbeing.

You can find help through our 24/7 wellbeing platform Spectrum, self-help resources and via our Counselling, Mental Health and Wellbeing Service. Our specially trained team can provide guidance through one-to-one sessions or group workshops on topics such as relaxation, stress management and confidence building. Find out more at mmu.ac.uk/studentwellbeing

PRE-SESSIONAL ENGLISH COURSES

If you need help to improve your English before you start your course, our Language Centre offers British Council accredited courses.

These give you the chance to develop your English language ability in an academic environment and be introduced to the skills that you will need for effective learning throughout your studies.

You will need to gain a recognised English language qualification as a condition of your offer from us. This applies to both undergraduate and postgraduate courses. The score required will vary depending on your area of study.

A list of accepted English language qualifications can be found on our website at mmu.ac.uk/englishrequirements

We offer both long-term and intensive pre-sessional English courses to help you achieve the language level you need. We also offer various start dates throughout the year.

Our team of qualified English language teaching professionals have many years' experience preparing students for university study. Our pre-sessional English courses support international students still needing to meet the English language requirements of their chosen degree course.

The five-, ten- and 20-week intensive English and academic skills programmes focus on improving your language and preparing you for study in the UK. We also offer 30-week courses for those needing more general English language support and development.

The assessment is continuous and there are no final exams. On successful completion, you begin your degree without having to take another IELTS test.

You may be eligible to apply for a joint Confirmation of Acceptance for Studies (CAS), saving you money on your visa application. For more information, email languagecentre@mmu.ac.uk

“The course academics are really enthusiastic and friendly, which makes the classes really energetic. If we have any queries or concerns they are great at supporting us. I have really gained a lot from this course.”

Yingtian
20-week Pre-sessional English
China



Year-round pre-sessional English courses (for September start courses):

Course dates	Course length (weeks)	Entry level for progression to undergraduate course	Entry level for progression to postgraduate course	2024/25 fees *
6 Jan 2025 – 29 Aug 2025 (Induction: 6 Jan)	30	4.5 (no skill less than 4.0)	4.5 (no skill less than 4.0)	£10,899
26 Mar 2025 – 29 Aug 2025 (Induction: 26-28 Mar)	20	4.5 (no skill less than 4.5)	5.0 (no skill less than 4.5)	£7,360
18 Jun 2025 – 29 Aug 2025 (Induction: 18-20 Jun)	10	5.0 (no skill less than 5.0)	5.5 (no skill less than 5.0)	£3,933
23 Jul 2025 – 29 Aug 2025 (Induction: 23-25 Jul)	5	5.5 (no skill less than 5.5)	6.0 (no skill less than 5.5)	£1,966

Please note: Entry levels for pre-sessional English courses are based on IELTS scores. If you need to apply for a Student visa, you must take a UKVI IELTS test. Fees include all teaching and learning materials, assessments and a certificate. You also have full access to the University’s facilities, including the Library, IT and Sports Centre. Accommodation is not included. We provide a social programme and you can also get involved in the Union’s clubs and societies. Some activities may have an extra cost.

* Pre-sessional English course fees are subject to change, which may include an increase in cost for the 2025/26 academic year. mmu.ac.uk/pre-sessional

DOCTORAL RESEARCH STUDIES

Doctoral study at Manchester Metropolitan University is about more than just your thesis.

While you are here to undertake important and exciting research, you will also be joining a university that prides itself on having supportive supervisory staff, offering many opportunities to develop skills that will help you to succeed in your chosen career.

We want you to feel a part of our community, and we offer many chances for you to meet other researchers at training sessions, development courses or in social settings.

Many of our international students join Manchester Met to become a part of an ambitious university that is continuously improving its research strengths.

Our faculties have also celebrated an excellent performance in the Research Excellence Framework (REF 2021) with 90% of our research impact being world-leading or internationally excellent. We have four subjects in the top ten for research power: Art and Design, Education, English and Sport.

“The Arts and Humanities Research Training Programme sessions are helpful and have allowed me to learn more about what is expected of postgraduate research studies in the UK.”

Erika

The Leverhulme Unit for the Design of Cities of the Future (LUDeC) PhD Studentship
France





“I have had students mention the fact that our research papers have been used extensively at their universities, and so for them to come and learn the techniques directly from us is an advantage.”

Dr Gladys Onambele-Pearson
Faculty of Science and Engineering

Supporting your research

Upon joining the Manchester Met doctoral community you will have access to a programme of professional development workshops and online resources. The training and development programme is tailored to the needs of the researcher, continually evolving to ensure our research community has the support to excel not only within their specific projects, but also throughout their careers.

Planning your career

Completing a doctoral programme can open many doors. We offer a range of careers activities, from CV workshops to appointments with professional careers advisers. You can also access our online careers centre, which provides more than 5,000 career and professional development resources, including interactive assessments and tests, an interview simulator, e-learning courses, industry reports and an A–Z of careers advice.

Research missions

Our research is focused on five world-transforming missions. Each is committed to advancing understanding of the pressing problems facing our planet and global society. The missions drive a better understanding of the world around us, advancing knowledge and delivering new insights working with policymakers, industry, businesses and wider society.

Our research missions are:

- Tackling inequalities
- Championing creative excellence
- Leading sustainability
- Transforming health
- Driving economic growth

We will continue to apply our research to tackle inequalities and shape a fairer society.

Find out more at

mmu.ac.uk/research/research-centres





YOUR CAREER STARTS HERE

Our Careers Service is here to help you with your future career. We have dedicated teams of advisers in each faculty who can provide expert advice tailored to your career goals.

Throughout your student journey, you will have access to resources that will help you to explore your options, build your portfolio of skills and experience, and equip you to compete in the graduate job market.

These are just some of the ways we can help you start your global career.

Careers advice

Our advisers can help you consider your options, plan your career and advise you on applications, interviews and assessments.

We offer a range of tools to help you explore your options, such as digital self-assessment tools that can support you to create a personalised career plan. We also have a range of services focused on supporting students into employment, including a campus Jobs Hub and an employer event programme that enables you to learn about opportunities in different sectors and professions.

Online resources

You can access an extensive range of digital resources 24 hours a day to support your career success, including automated CV checks, practice video interviews, self-assessments, industry insight reports and much more. Wherever you are, our online 'Ask a Question' service allows you to ask your career questions and get a reply from one of our advisers.

Experience and skills

Many courses offer the opportunity to undertake work experience through internships or live projects. If secured, this provides direct experience of working with a business, which you can add to your CV and talk about when you attend job interviews. You can also apply for part-time jobs on campus and volunteering opportunities.

“We get help and support from the University through study skills, LinkedIn Learning and experienced tutors who are pushing us to stand out.”

Maithili

MSc Digital Marketing
Communications
Bangladesh



Jobs during study

We advertise hundreds of part-time roles to our students throughout the year, giving you the opportunity to earn while you learn. Our Jobs4Students team advertises paid roles that only Manchester Met students can apply for.

Meet with employers at events

During the academic year, we host major career fairs that allow you to meet a wide range of employers on campus. Recent employers have included HSBC, Manchester Airport Group and The Hut Group. During these fairs you will discover job opportunities and find out what employers want from graduate applicants.

Enterprise learning

The Student and Graduate Enterprise team can support you to develop your enterprise skills. We believe that anyone can possess an entrepreneurial spirit, whether their goal is to start a business after graduation or enhance their employability skills.

We offer a wide range of activities including workshops, talks from entrepreneurs and freelancers, funding competitions, online courses, and an enterprise community.

While international students cannot typically be self-employed or start a business while studying, the Student and Graduate Enterprise team ensures you have access to the specialist support and opportunities needed to be ready to put your plans into practice after graduation.

Mentoring

Our mentoring programme matches students to industry professionals who can guide you with making decisions about your future career. The Mentor Me programme provides a valuable opportunity for students to gain an insight into the world of work and for mentors to share their experience.

Find out more at mmu.ac.uk/careers

SUPPORTING YOUR CAREER

Our degree programmes are designed with your employability in mind.

We offer professionally relevant qualifications that have a firm focus on industry experience, in subject areas directly related to what employers need.

We will help you grow the right mix of skills, experience and confidence needed to go out and reach your potential in the world. With our impressive network of industry partners, we make our courses relevant to your career.

Professional accreditation

We have links with professional bodies and associations, including ARB and RIBA, to ensure the content of our courses is up to date and relevant to industry.

Our Business School holds the globally recognised trio of accreditations from EQUIS, AACSB and AMBA. Our triple accreditation places us among the very best business schools in the world.

Industry links

Our academic staff have strong links with industry partners across all subject areas, contributing their knowledge and experience to the design of our courses and also giving specialist lectures and seminars to students.

Professional networks

Our academic staff and professional services staff maintain links to multiple industries and professions to create work opportunities for placements, internships and graduate roles.

“I am impressed by the consistent support of the faculty on my course. They not only foster a collaborative learning environment but also offer valuable opportunities for academic growth and career success through guest lectures with industry experts.”

Kulunu
MSc Luxury Fashion Management
Sri Lanka





Future me

We understand that university is much more than your course, which is why you get Future me – a programme to help you build the skills, confidence and experience you need to succeed at and beyond university. Designed for everyone but tailored by you, you can choose from lots of options to help you become the person you hope to be.

Your Future me plan makes focusing on the future easy. Create a personal development plan unique to you and get guidance during a four-stage cycle. Throughout your studies, you repeat this cycle and explore the road ahead — setting goals, embracing new challenges, and growing in confidence along the way.

mmu.ac.uk/future-me

Rise

Our Rise initiative offers a huge range of co-curricular learning opportunities that you can build into your Future me plan, such as short courses, projects and collaborations.

It is a great way to boost your employability and potentially earn extra credits towards your degree.

Find out more at mmu.ac.uk/rise

OUR INTERNATIONAL ALUMNI

Manchester Metropolitan University has 350,000 alumni across the world in more than 170 countries, with new graduates joining the community each year.

This creates a worldwide network of individuals whose diverse careers, achievements and experiences have helped to shape the world in which we live. Upon graduation, you will become part of this global network, which offers access to exclusive discounts, dedicated career support and lifelong learning.



Sam Thomas – USA

**Associate Director for Customer Experience at Spotify
BA (Hons) International Business**

Sam studied BA International Business at Manchester Met and identified Spotify as a company he wanted to work for during his studies, after focusing on digital music distribution for his dissertation. Sam secured a role after graduating as a Customer Adviser at Spotify. He now works as Associate Director of Customer Experience, overseeing two teams across three locations: in New York, Sweden and the UK.



Carol Ofem – Nigeria

**Director of Strategy at Yellow Brick Road Lagos
MSc International Public Relations**

Being drawn to the opportunities that Manchester as a city has to offer, Carol describes her time at Manchester Met as one of the best decisions of her adult life. Having graduated from MSc International Public Relations in 2010, her course curriculum, group work and assignments helped her lay a solid foundation for her career. Carol now works as Director of Strategy for Yellow Brick Road in Lagos.



Heba Felimban – Saudi Arabia

**Senior Physical Therapist at Saudi Ministry of Health
BSc (Hons) Physiotherapy, MSc Physiotherapy**

Heba studied her undergraduate and postgraduate qualifications in Physiotherapy at Manchester Met. Her first job after graduating was as a Physical Therapist. She has now moved up into a senior position and has been assigned various leadership positions. Heba has been listed in the directory of the most prominent personalities of the Arab world as a result of her impressive career. She appreciates the level of professional, personal and academic support she received during her time at Manchester Met and this has continued after her studies.



Manasa Parameswara – India

**Head of Buying at Calvin Klein and Tommy Hilfiger India
MSc International Fashion Marketing**

Manasa studied MSc International Fashion Marketing at Manchester Met and kickstarted her career in fashion after her graduation in 2009. Studying her course helped her stand out in the industry and allowed her to bring an international perspective to her work as Head of Buying at Calvin Klein and Tommy Hilfiger India. She particularly values how her time at Manchester Met helped her build a network of peers from various cultures and backgrounds.



Jessie Lau – Hong Kong

**Legal Counsel at GF Holdings (Hong Kong)
Corporation Limited
LLB (Hons) Law**

Determined to become a lawyer, Jessie got an offer to study LLB (Hons) Foundation Year Law with Manchester Met, followed by LLB (Hons) Law. After her graduation in 2010, she found a job within the first week of returning to Hong Kong, gaining exposure in general practice as a paralegal in a local law firm. After becoming a lawyer in 2017, Jessie gained experience in private practice, before joining GF Holdings as Legal Counsel more recently.

FACULTY OF ARTS AND HUMANITIES

mmu.ac.uk/artshumanities

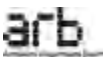
The Faculty of Arts and Humanities produces world-leading research and education that changes lives with courses in art, design, fashion, politics, theatre, social sciences, architecture, English, journalism, languages and much more.

With creativity and innovation at the heart of all we do, we offer our students an environment where they can push boundaries and explore possibilities with the guidance and support of academics who are at the forefront of their fields.

We are home to a number of distinct schools and departments with national and international recognition. Manchester School of Art, one of the UK's oldest art schools, and Manchester School of Architecture, ranked fifth in the world,* sit alongside the School of Digital Arts: a £35m investment to develop the next generation of creative talent. Led by Carol Ann Duffy (CBE) (UK Poet Laureate 2009–2019), our Writing School staff are internationally renowned poets and authors and have supported more than 100 graduates in publishing work, and our Fashion Institute offers courses in all areas of the fashion industry – from business, buying and merchandising to design, art direction and promotion.

Our students, graduates and staff continually make a significant impact – in industry, in the community and through influencing the government. We work closely with the creative and digital industries in Manchester, giving our students the opportunity to build networks, work on real-world projects, and prepare themselves for their professional life.

Professional accreditations





Research excellence

We are second in the UK for the power of our research in Art and Design (REF 2021).



Real-world experience

We offer students the opportunity to work with creative industry professionals in Manchester and beyond.



Internationally renowned alumni

Our alumni include actor Dame Julie Walters, designer Thomas Heatherwick and Sarah Burton, creative director of Alexander McQueen.



Industry-standard facilities

We offer a range of digital and technical workshops, teaching spaces and extensive studios.

FACULTY OF BUSINESS AND LAW

mmu.ac.uk/business-and-law

Business

We are a triple-accredited Business School. This achievement places us among the very best Business Schools in the world.

These accreditations are testament to our high standards of excellence in teaching and research, as well as our commitment to continuous innovation in our curriculum and student experience.

We offer a wide range of courses, all designed to enhance your employability and give you the skills you need to succeed in the current job market. Many of our courses provide placement and internship opportunities, including international experiences. We have links with global organisations, such as Walt Disney, Deloitte, Bauer Media, Bentley and Enterprise.

We work closely with industry leaders and professional bodies to ensure that our course content is innovative and meets the requirements of employers.

Law

Manchester Law School has been at the heart of legal education and groundbreaking legal research for over 50 years. We provide law courses for every stage of the legal profession.

As a student at the Law School, you will have access to facilities such as a state-of-the-art moot courtroom, legal resources and a dedicated careers and employability service.

Our strong working links with some of the largest law firms in the UK, such as Eversheds, DWF and Deloitte, mean that you benefit from regular guest lectures from active practitioners, work placements and employer networking events.





We are a triple-accredited Business School

Proud to be in the top 1% of Business Schools worldwide



Top-ranked subject area

Ranked sixth in the UK for Hospitality, Leisure, Recreation and Tourism – Times University League Table 2024.



Teaching excellence

Teaching teams consist of highly experienced professionals and internationally recognised researchers.



World-leading

100% of our research impact in Business and Management is world-leading or internationally excellent – REF 2021.



Opportunities

Students can access a range of career-enhancing activities such as live business projects, pro bono work, employer networking events and industrial placements.

FACULTY OF HEALTH AND EDUCATION

mmu.ac.uk/health-and-education

Health

Our internationally recognised degree courses prepare future health, social care, social work and clinical professionals to go on and help shape the ever-changing world of healthcare delivery.

Our research remains highly relevant to public health, from finding better ways to address health inequalities globally, to investigating ways to improve the assessment, treatment and prevention of musculoskeletal conditions.

Education

You will benefit from the experience we have developed from educating teachers, practitioners and professionals over the last 100 years.

Our courses allow you to collaborate across specialisms, consider other perspectives and become part of a dynamic community of education professionals who you can learn from and share best practice with. We are delivering projects that contribute to positive change in communities across the world, from our Children without Limits initiative exemplifying our commitment to challenging inequalities and providing employability opportunities for our students to teaching refugee populations in Lebanon about fire safety.



Professional accreditations





Industry-standard facilities

These include a laboratory for analysing patterns of movement, a simulation room of a hospital ward, a physiotherapy clinic and physiotherapy practice rooms.



Strong partnerships

We are connected with a wide range of external organisations, including the National Health Service (NHS), Manchester City Football Club, Manchester United Foundation, the Rugby League World Cup, schools and local authorities.



Teacher training

We train more than 500 teachers every year, so you will be joining a vibrant community of other student teachers and will be able to share your experiences.



Top-ranked subject areas

Ranked 13th in the UK for Physiotherapy – Complete University Guide 2024 and 14th in the UK for Speech and Language Therapy – Complete University Guide 2024.

FACULTY OF SCIENCE AND ENGINEERING

mmu.ac.uk/sci-eng

Our Faculty of Science and Engineering is one of the largest research-led science and technology education providers in the UK.

We are playing a leading role in addressing the major challenges of our time – from health, wellbeing and sustainability to future technologies, strengthening cybersecurity and developing advanced materials for clean energy.

Our students thrive in an environment where our excellence in research informs our teaching to ensure graduates are equipped with the skills that employers need.

We are committed to driving change, investing over £115m to transform the faculty. With industry-standard facilities in the new Dalton building and a team of high-quality teaching staff, you will have the opportunity to gain experience through projects with industry and practical learning.

We are also home to the Manchester Fuel Cell Innovation Centre, where our experts are working with businesses to develop and test clean-energy solutions, as well as PrintCity, an additive and digital manufacturing facility that offers industry-standard 3D printers, scanners and CAD software under one roof.

Together with our strong industry connections, our students are well placed to find placement opportunities, build their professional network and pursue a career with real-world impact.



Professional accreditations and endorsements





A new cutting-edge building

Our brand-new Dalton building provides you with opportunities to collaborate with students, staff and industry. It has transformed the way we teach and the way our students learn in the Faculty of Science and Engineering. It provides new and improved teaching spaces including a 200-student capacity 'Super Lab', advanced computer suites and state-of-the-art engineering studios.

For more information, visit mmu.ac.uk/scieng-dalton.



Investment

We have invested £115m to transform the way we teach in the Faculty of Science and Engineering.



Top-ranked subject area

Ranked second in the UK for Electronic and Electrical Engineering – Guardian University League Tables 2024 (by subject area).



Research excellence

Placed sixth in the UK for the power of our sport research – REF 2021.



World-leading

100% of our research impact in Earth Systems and Environmental Sciences is world-leading or internationally excellent – REF 2021.



Industry links

Benefit from our strong industry links with internationally renowned companies such as Autodesk, Dyson, GCHQ and Siemens.

INSTITUTE OF SPORT

Our Institute of Sport is a world-class learning environment that champions everything that sport can do, like strengthen communities, build a healthier society, inspire the next generation and push the limits of human performance.

At Manchester Met, you will study in a city with a passion for sport. You will learn from experts, including accredited scientists and experienced professionals from the world of sport management, marketing, coaching, exercise science and nutrition.

Many of our teaching staff on our leading sports courses have gained professional sports-sector experience. You will directly benefit from their expertise as well as well-established industry links and partnerships, such as with Manchester City and Manchester United. Plus, the city is home to many sports organisations, giving you options for placements during your studies or a professional role once you graduate.

Our Platt Lane Sports Complex has many facilities, including physiology laboratories, seminar rooms, indoor and outdoor 3G pitches, a new strength and conditioning suite and more. Elsewhere, we have invested heavily in modern diagnostic technologies for professional athletes and members of the public,



product development kitchens and food testing laboratories for sports nutrition, and specialist equipment for sportswear design and creation.

Our world-class Institute of Sport is built to help you explore, analyse, understand, and compete.

mmu.ac.uk/institute-of-sport

Professional accreditations and endorsements





Premium partnerships

Benefit from our vast network of partnerships, including Manchester City, Manchester United, and national bodies such as The Football Association (FA), British Swimming and British Cycling.



World-class facilities

We have invested £26 million in our state-of-the-art Institute of Sport building, which gives you access to the latest technologies and world-class facilities, including human performance labs, an MRI scanner and an environmental chamber for simulating extreme climates.



Research excellence

95% of our research outputs are world-leading or internationally excellent, according to the most recent Research Excellence Framework (2021).



OUR COURSES

Manchester Met offers a variety of undergraduate and postgraduate degrees for international students. We have courses that start in September 2025 and also separate courses that start in January 2026. Many of our degrees also have optional work placements to help you gain industry experience. For the latest course information visit mmu.ac.uk/study

Important notice

This guide was developed in July 2024 to help you choose the right course for the 2025/26 academic year. The information is intended to give you an overview and reflects the courses as they are at this time.

The information in the online prospectus is the most detailed and up-to-date. Visit the prospectus at mmu.ac.uk/study. We recommend that you review it twice: first, when you choose your course and second, at a

later date before you accept your offer. All the listed courses are delivered full-time and some also offer a part-time study option. Please note that students considering a part-time postgraduate taught course will not be sponsored by the University for a Student visa. For further guidance, please visit mmu.ac.uk/visas

For more up-to-date information on course content and university life, please visit mmu.ac.uk/study



UNDERGRADUATE COURSES

Courses are listed by department title or subject area, where appropriate.

FACULTY OF ARTS AND HUMANITIES

Department of English

- BA (Hons) Creative Writing **F**
- BA (Hons) English **F**
- BA (Hons) English and American Literature **F**
- BA (Hons) English and Creative Writing **F**
- BA (Hons) English and Film **F**
- BA (Hons) English and Multimedia Journalism **F**
- BA (Hons) Film and Media Studies **F**

Department of History, Politics and Philosophy

- BA (Hons) Ethics, Religion and Philosophy **F**
- BA (Hons) History **F**
- BA (Hons) History and International Relations **F**
- BA (Hons) History and Politics **F**
- BA (Hons) International Relations **F**
- BA (Hons) Philosophy **F**
- BA (Hons) Politics **F**
- BA (Hons) Politics and Philosophy **F**

Department of Sociology

- BSc (Hons) Criminology **F**
- BSc (Hons) Criminology and Sociology **F**
- BSc (Hons) Sociology **F**

Journalism, Information and Communications

- BSc (Hons) Digital Media and Communications **F**
- BA (Hons) Multimedia Journalism **F**

Languages, Linguistics and TESOL

- BA (Hons) Business Management (with a modern language) **F**
- BA (Hons) Business Management and French **F**
- BA (Hons) Business Management and Spanish **F**
- BA (Hons) French and Spanish **F**
- BA (Hons) French and Linguistics **F**
- BA (Hons) French, Interpreting and Translation **F**
- BA (Hons) French (with a modern language) (Japanese, Mandarin Chinese, Modern Standard Arabic or Spanish) **F**
- BA (Hons) Spanish and Linguistics **F**

F Selected degrees are available with a Foundation Year. For further information visit mmu.ac.uk/foundationyear

Placement and/or study abroad options may be available on some courses, potentially extending the duration of study. Study abroad will be subject to any international travel restrictions and/or availability. Please see mmu.ac.uk/study

BA (Hons) Spanish, Interpreting and Translation **F**

BA (Hons) Spanish (with a modern language) (French, Japanese, Mandarin Chinese or Modern Standard Arabic) **F**

BA (Hons) English Language and Linguistics **F**

BA (Hons) English Language and Linguistics (with a modern language) (French, Japanese, Mandarin Chinese, Modern Standard Arabic or Spanish) **F**

BA (Hons) Teaching English to Speakers of Other Languages and French **F**

BA (Hons) Teaching English to Speakers of Other Languages and Spanish **F**

BA (Hons) Teaching English to Speakers of Other Languages and Linguistics **F**

BA (Hons) Teaching English to Speakers of Other Languages (with a modern language) (French, Japanese, Mandarin Chinese, Modern Standard Arabic or Spanish) **F**

BA (Hons) English (with a modern language) (French, Japanese, Mandarin Chinese, Modern Standard Arabic or Spanish) **F**

BA (Hons) English and Teaching English to Speakers of Other Languages **F**

BA (Hons) Linguistics and English **F**

BA (Hons) International Relations and French **F**

BA (Hons) International Relations and Spanish **F**

BA (Hons) International Relations (with a modern language) (French, Japanese, Mandarin Chinese, Modern Standard Arabic or Spanish) **F**

Manchester Fashion Institute

BA (Hons) Fashion

BA (Hons) Fashion Art Direction

BSc (Hons) Fashion Business and Management

BSc (Hons) Fashion Buying and Merchandising

BA (Hons) Fashion Communication

BA (Hons) Fashion Design and Technology

BSc (Hons) Fashion Marketing

BA (Hons) International Fashion Business (Top-Up)

BA (Hons) International Fashion Design (Top-Up)

Manchester School of Architecture

BA (Hons) Architecture

Manchester School of Art

BA (Hons) Craft

BA (Hons) Art History and Curating

BA (Hons) Fine Art

BA (Hons) Fine Art and Art History

BA (Hons) Graphic Design

BA (Hons) Illustration with Animation

BA (Hons) Interior Design

BA (Hons) International Craft (Top-Up)

BA (Hons) International Graphic Design (Top-Up)

BA (Hons) International Illustration (Top-Up)

BA (Hons) International Interior Design (Top-Up)

F Selected degrees are available with a Foundation Year. For further information, visit mmu.ac.uk/foundationyear

BA (Hons) International Product Design (Top-Up)

BA (Hons) International Textiles (Top-Up)

BA (Hons) Product Design

BA (Hons) Product Design and Craft

BA (Hons) Textiles in Practice

UAL Foundation Diploma in Art and Design

Manchester School of Theatre

BA (Hons) Acting

BA (Hons) Drama and Contemporary Performance

School of Digital Arts (SODA)

BA (Hons) Animation **F**

BA (Hons) Filmmaking **F**

BA (Hons) Future Media Production **F**

BA (Hons) Games Art **F**

BSc (Hons) Games Design **F**

BA/BSc (Hons) International Digital Arts (Top-Up) **F**

BA (Hons) Music and Sound Design **F**

BA (Hons) Photography **F**

BSc (Hons) Web and User Experience Design **F**

FACULTY OF BUSINESS AND LAW

Department of Finance and Economics

BSc (Hons) Accounting and Finance **F**

BSc (Hons) Banking and Finance **F**

BSc (Hons) Economics

BA (Hons) Economics **F**

BSc (Hons) Financial Management (Top-Up)

Department of Marketing, International Business and Tourism

BA (Hons) Advertising and Brand Communications

BA (Hons) Business and Marketing

BA (Hons) International Business Management **F**

BA (Hons) International Tourism Management **F**

BA (Hons) Marketing

Department of Operations, Technology, Events and Hospitality Management

BSc (Hons) Business Technology

BA (Hons) Events Management **F**

BSc (Hons) International Hospitality and Tourism Management (Top-Up)

BSc (Hons) International Hospitality Business Management **F**

BSc (Hons) International Hospitality Business Management (Top-Up)

F Selected degrees are available with a Foundation Year. For further information, visit mmu.ac.uk/foundationyear

Placement and/or study abroad options may be available on some courses, potentially extending the duration of study. Study abroad will be subject to any international travel restrictions and/or availability. Please see mmu.ac.uk/study

Department of People and Performance

BA (Hons) Business and Human Resource Management **F**

BA (Hons) Business Psychology **F**

BA (Hons) Human Resource Management **F**

BSc (Hons) Sports Business Management **F**

BSc (Hons) Sports Marketing Management **F**

Department of Strategy, Enterprise and Sustainability

BA (Hons) Business Administration and Management (Top-Up)

BA (Hons) Business Management **F**

BA (Hons) Business Management with Law

Manchester Law School

LLB (Hons) **F**

FACULTY OF HEALTH AND EDUCATION

Department of Health Professions

BSc (Hons) Physiotherapy

BSc (Hons) Speech and Language Therapy

Department of Psychology

BSc (Hons) Forensic Psychology

BSc (Hons) Psychology

BSc (Hons) Psychology with Counselling and Psychotherapy

Department of Social Care and Social Work

BA (Hons) Social Work

School of Education

BA (Hons) Early Years and Childhood Studies **F**

BA (Hons) Education **F**

BSc (Hons) Educational Psychology **F**

BA (Hons) Primary Education with QTS*

BA (Hons) Special and Inclusive Education

School of Nursing and Public Health

BSc (Hons) Adult Nursing

BSc (Hons) Adult Nursing (Top-Up)

FdSc Health and Care Practice (Nursing Associate)

BSc (Hons) Mental Health Nursing

BSc (Hons) Nursing Studies (Top-Up) (International)

* With a recommendation for QTS

F Selected degrees are available with a Foundation Year. For further information, visit mmu.ac.uk/foundationyear

FACULTY OF SCIENCE AND ENGINEERING

Department of Computing and Mathematics

BSc (Hons) AI and Data Science **F**

BSc (Hons) Computer Animation and Visual Effects **F**

BSc (Hons) Computer Games Development **F**

BSc (Hons) Computer Science **F**

BSc (Hons) Cyber Security **F**

BSc (Hons) Mathematics **F**

BSc (Hons) Software Engineering **F**

Department of Engineering

BEng (Hons) Biomedical Engineering **F**

BEng (Hons) Electrical and Electronic Engineering **F**

MEng (Hons) Electrical and Electronic Engineering

BEng (Hons) Mechanical Engineering **F**

MEng (Hons) Mechanical Engineering

BSc (Hons) Product Design Engineering **F**

Department of Life Sciences

BSc (Hons) Biomedical Science **F**

M BioMed Sci (Hons) Biomedical Science

BSc (Hons) Human Biosciences

BSc (Hons) Human Physiology **F**

Department of Natural Sciences

BSc (Hons) Animal Behaviour and Conservation **F**

BSc (Hons) Biology **F**

MChem (Hons) Chemistry

BSc (Hons) Chemistry **F**

BSc (Hons) Environmental Science **F**

BSc (Hons) Geography **F**

BSc (Hons) Human Geography

BSc (Hons) Medicinal and Pharmaceutical Chemistry **F**

MChem (Hons) Medicinal and Pharmaceutical Chemistry

BSc (Hons) Microbiology and Molecular Biology **F**

BSc (Hons) Zoology **F**

Department of Sport and Exercise Sciences

BSc (Hons) Health and Exercise Science **F**

BSc (Hons) Manchester City Community Football Coaching **F**

BSc (Hons) Sport and Exercise Nutrition

BSc (Hons) Sport and Exercise Science **F**

BSc (Hons) Sport and Exercise Science (Distance Learning)

BSc (Hons) Sport and Youth Leadership

BSc (Hons) Sport Coaching and Development **F**

F Selected degrees are available with a Foundation Year. For further information, visit mmu.ac.uk/foundationyear

Placement and/or study abroad options may be available on some courses, potentially extending the duration of study. Study abroad will be subject to any international travel restrictions and/or availability. Please see mmu.ac.uk/study



POSTGRADUATE TAUGHT COURSES

Courses are listed by department title or subject area where appropriate.

FACULTY OF ARTS AND HUMANITIES

Department of English

MA Creative Writing

MFA Creative Writing

MA English Studies

MA Publishing

Department of History, Politics and Philosophy

MA History

MA International Relations and
Global Communications

MA Philosophy

MA Public History and Heritage

Department of Sociology

MA Applied Criminology

MSc/PgDip/PgCert Evaluation and
Policy Analysis

Master of Public Administration (MPA)

Journalism, Information and Communications

MA/PgDip Library and Information
Management

MA Multimedia Journalism

Languages, Linguistics and TESOL

MA Applied Linguistics

Manchester Fashion Institute

MSc Fashion Buying and Merchandising
Management

MA Fashion Design Technology

MSc International Fashion Business
Management

MSc International Fashion Marketing

MSc Luxury Fashion Management

Manchester School of Architecture

MA Architecture and Adaptive Reuse

PgCert Architecture and Contemporary
Practice (RIBA Part 3)

MA Architecture and Urbanism

MArch Master of Architecture

MLA Master of Landscape Architecture

Placement and/or study abroad options may be available on some courses, potentially extending the duration of study. Study abroad will be subject to any international travel restrictions and/or availability. Please see mmu.ac.uk/study

Manchester School of Art

MA Contemporary Curating
MA/MSc Craft
MA/MSc Design for Health and Wellbeing
MA Design Innovation
MA/MFA Fine Art
MA Graphic Design and Art Direction
MA Illustration
MA Interiors
MA/MSc Product Design
MA/MSc Textiles

Manchester School of Theatre

MA/MFA Performance

School of Digital Arts (SODA)

MA Animation
MA Filmmaking
MA Games Art
MA Photography
MA Sound Design

FACULTY OF BUSINESS AND LAW

Department of Finance and Economics

MSc Accounting and Finance
MSc Applied Economics
MSc Finance
MSc Finance and Business
MSc Financial Technology (FinTech)
MSc Sustainable Finance

Department of Marketing, International Business and Tourism

MSc Creative Advertising Strategy
MSc Digital Marketing Communications
MSc International Business Management
MSc International Marketing Management
MSc International Tourism and Hospitality Management

MSc Market Research and Analytics
MSc Marketing

Department of Operations, Technology, Events and Hospitality Management

MSc Business Analytics
MSc International Events Management
MSc Operations and Supply Chain Management
MSc Project Management

People and Performance

MSc/PgDip Human Resource Management
Master of Business Administration (MBA)
Master of Sport Directorship (MSD)
MSc Sport Business, Management and Policy

Department of Strategy, Enterprise and Sustainability

MSc Entrepreneurship

MSc Management

MSc Management and Consultancy

MSc Management and Sustainability

Manchester Law School

Bar Training Course

Graduate Diploma in Law (Common Professional Examination)

LLM Graduate Legal Studies

LLM Legal Practice

LLM (Master of Laws)

LLM in Legal Practice at the Bar

Top-up LLM (LLM in Legal Practice)

LLM International Sports Law and Governance

FACULTY OF HEALTH AND EDUCATION

Department of Health Professions

MSc Advanced Physiotherapy

MSc Dietetics (Pre-registration)

MSc Food Science and Innovation

MSc Human Nutrition

MSc Occupational Safety, Health and Environment

MSc Occupational Therapy (Pre-registration)

MSc Physiotherapy (Pre-registration)

MSc Speech and Language Therapy (Pre-registration)

MSc Sport and Exercise Medicine

Department of Psychology

MSc Childhood Development and Wellbeing in Practice

MSc Forensic Psychology (BPS accredited)

PgDip Forensic Psychology Practice

MSc Health Psychology

MSc Psychological Wellbeing in Clinical Practice

MSc/PgDip Psychology (Conversion)

Department of Social Care and Social Work

MA Social Work

School of Education

MA Education

MA Educational Leadership

MA Higher Education

MA Inclusive Education

PGCE Primary with QTS*

PGCE Secondary Art and Design with QTS*

PGCE Secondary Biology with QTS*

PGCE Secondary Chemistry with QTS*

PGCE Secondary Computing with QTS*

PGCE Secondary Design and Technology with QTS*

* With a recommendation for QTS

Placement and/or study abroad options may be available on some courses, potentially extending the duration of study. Study abroad will be subject to any international travel restrictions and/or availability. Please see mmu.ac.uk/study

Please visit mmu.ac.uk/study for the most up-to-date course information.

PGCE Secondary Drama with QTS*
PGCE Secondary English with QTS*
PGCE Secondary French with QTS*
PGCE Secondary Geography with QTS*
PGCE Secondary History with QTS*
PGCE Secondary Mathematics with QTS*
PGCE Secondary Music with QTS*
PGCE Secondary Music with Specialist Instrument Teaching with QTS*
PGCE Secondary Physical Education with QTS*
PGCE Secondary Physics with QTS*

PGCE Secondary Psychology with QTS*
PGCE Secondary Religious Education with QTS*
PGCE Secondary Social Science with QTS*
PGCE Secondary Spanish with QTS*
MA Social Research

Nursing and Public Health

MSc Adult Nursing (Pre-registration)
MPH Global Public Health
MSc Mental Health Nursing (Pre-registration)

FACULTY OF SCIENCE AND ENGINEERING

Department of Computing and Mathematics

MSc Artificial Intelligence
MSc Computer Games Development
MSc Computer Science
MSc Cyber Security
MSc Data Science

Department of Engineering

MSc Digital Design and Manufacturing
MSc Engineering Project Management
MSc Engineering Smart Systems

Department of Life Sciences

MSc Biomedical Science
MSc Cellular Pathology
MSc Clinical Biochemistry

MSc Haematology and Transfusion Science
MSc Human Physiology
MSc Medical Microbiology

Department of Natural Sciences

MSc Advanced Materials
MSc Animal Behaviour and Evolution
MSc Environmental Sustainability
MSc Global Conservation Biology
MSc Zoo Conservation Biology

Department of Sport and Exercise Sciences

MSc Clinical Exercise Physiology
MSc Sport and Exercise Psychology
MSc Sport and Exercise Science
MSc Sport Nutrition
MSc Strength and Conditioning

* With a recommendation for QTS



Placement and/or study abroad options may be available on some courses, potentially extending the duration of study. Study abroad will be subject to any international travel restrictions and/or availability. Please see mmu.ac.uk/study

Please visit mmu.ac.uk/study for the most up-to-date course information.

COURSES WITH A JANUARY 2025 START DATE

FACULTY OF ARTS AND HUMANITIES

Department of English

MA Creative Writing

MFA Creative Writing

Department of History, Politics and Philosophy

MA Philosophy

Languages, Linguistics and TESOL

MA Applied Linguistics

Manchester School of Architecture

PgCert Architecture and Contemporary
Practice (RIBA Part 3)

FACULTY OF BUSINESS AND LAW

Department of Finance and Economics

MSc Accounting and Finance

MSc Finance

Department of Marketing, International Business and Tourism

MSc Digital Marketing Communications

MSc International Business
Management

MSc International Marketing
Management

MSc International Tourism and
Hospitality Management

MSc Market Research and Analytics

MSc/PgDip/PgCert Place Management
and Leadership

Operations, Technology, Events and Hospitality Management

MSc Business Analytics

People and Performance

MSc Sport Business, Management
and Policy

Department of Strategy, Enterprise and Sustainability

MSc Entrepreneurship

MSc Management

MSc Management and Consultancy

MSc Management and Sustainability

Manchester Law School

LLM (Master of Laws)

FACULTY OF HEALTH AND EDUCATION

Department of Education

MA Higher Education

Department of Health Professions

MSc Dietetics (Pre-registration)

Nursing and Public Health

MSc Adult Nursing (Pre-registration)

BSc (Hons) Adult Nursing (Top-Up)

MPH Global Public Health

MSc Mental Health Nursing
(Pre-registration)

Department of Psychology

PgDip Forensic Psychology Practice

FACULTY OF SCIENCE AND ENGINEERING

Department of Engineering

MSc Engineering Project Management



Placement and/or study abroad options may be available on some courses, potentially extending the duration of study. Study abroad will be subject to any international travel restrictions and/or availability. Please see mmu.ac.uk/study

Please visit mmu.ac.uk/study for the most up-to-date course information.

HOW TO APPLY

1. Apply

We recommend submitting your application as early as you can to allow time for application and visa processing.

Undergraduate students can apply via the UCAS application system at ucas.com. UCAS is the UK's shared admissions service for higher education.

Postgraduate students can apply directly to the University for most courses using our online application system. Find out more about the application process at mmu.ac.uk/international/apply

We recommend reviewing the webpage of your chosen course carefully, noting any stated deadlines or course-specific requirements.

Both undergraduate and postgraduate students can apply through one of our education advisers or partners. They are familiar with our application process and have a lot of experience of helping students to apply to Manchester Metropolitan University. Contact details for our education advisers and partners can be found at mmu.ac.uk/yourcountry

2. Receive and accept your offer

If you applied via UCAS

You can log on to your UCAS hub to see the progress of your application. Once we have made a decision on your application, we will update UCAS and you will be able to view and accept your offer online.

If you applied via our education advisers or partners

Your adviser will contact you to update you about the status of your offer and they can contact us directly to accept the offer on your behalf. If you have any questions about the status of your offer, please contact your chosen education adviser directly.

If you applied directly

You can log in to your account on our website to track your offer status and accept your offer online. Alternatively, you can e-mail the Admissions team to confirm you accept the offer. Contact details for our Admissions team can be found on our website mmu.ac.uk/study/admissions





3. Complete deposit payment or provide sponsorship information

The deposit for international students on undergraduate and postgraduate courses is £5,000. This will be confirmed in your offer letter, and the deposit amount will be deducted from your tuition fees with the remaining amount payable after enrolment. You should pay your deposit after meeting your offer conditions and before requesting your CAS (Confirmation of Acceptance for Studies).

If you have an official financial sponsor, you will need to provide official evidence of financial sponsorship instead.

Documents required for application

- Academic transcripts and certificates for current and previous study, including secondary school awards
- A CV or an overview of your work experience
- Personal statement
- Academic reference, if required for your course (some courses may ask for two)
- Evidence of English language proficiency, if available
- Portfolio, if required for your course
- Passport

Doctoral research studies

To apply for doctoral study, please visit our website. Self-funded applicants can select their desired subject area from mmu.ac.uk/study/postgraduate/research

If you would like to apply for advertised research projects/scholarships, you can apply via the adverts listed at mmu.ac.uk/research/research-study/scholarships

You will then be directed to complete an online application through the direct applicant portal. It is important that you complete and upload a PGR Thesis Proposal Form in the final checklist section after submitting your online application as this is your chance to show a potential supervisor why you are the right person for the project.

For information on how to apply and a list of the supporting documents we will need you to send to us, visit mmu.ac.uk/applyresearch

Our Admissions team will contact you if any additional documents are required.

UNDERSTANDING YOUR OFFER

Conditional offer

A conditional offer means that you still have further documents to provide us (for example, exam results or transcripts). The additional documents required will be included in your conditional offer.

Unconditional offer

An unconditional offer means that you have met all of our entry requirements and you can now proceed to making your tuition fee deposit payment.

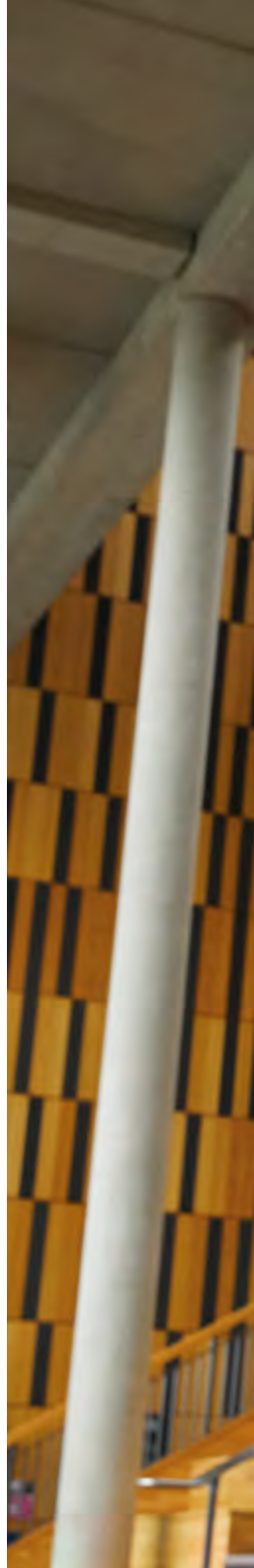
APPLYING FOR ACCOMMODATION

You will be eligible to apply for accommodation if you have accepted your course offer from Manchester Met as your first choice and it is firm. Once you have accepted your offer, it can take up to 72 hours to update via our accommodation system.

All applicants will receive an email when they become eligible to apply once the application process opens. The email will include a link to our application portal and further instructions on how to create an account.

Please note that accommodation information will only be sent to the email you originally applied to the University with. To update your email, please contact our Admissions team.

mmu.ac.uk/study/admissions





USEFUL INFORMATION AND CONTACTS

Our China team

We have a team based in Wuhan that can help with your application and provide a link between the University and our established network of education advisers. You can contact the Manchester Met China team directly on chinaoffice@mmu.ac.uk

Our India team

We have a team based in New Delhi that is able to provide assistance with applying to study at the University. You can contact the Manchester Met India team on india@mmu.ac.uk

Our South East Asia team

We have a team that is based in Kuala Lumpur that can provide support with your application to study at Manchester Met. You can contact this team on seasia@mmu.ac.uk

Education advisers

Our education advisers work in most countries to provide information and application assistance. Please visit your specific country page on our website for their contact details at mmu.ac.uk/yourcountry

Study options

All the courses listed in this guide are delivered full-time and some also offer a part-time study option. You can find more information about study options for each course in the online prospectus available at mmu.ac.uk/study/international

Please note that students considering a part-time postgraduate taught course will not be sponsored by the University for a Student visa. For further guidance on study visas, please visit mmu.ac.uk/visas

2025-26 University year

Semester 1:

September 2025–January 2026

Semester 2:

January 2026–May 2026

Virtual events

We organise a range of events throughout the year for international students to learn more about Manchester Met. Join our mailing list to find out more about upcoming events: mmu.ac.uk/study/international/choose

Contact us

Get in touch with our International team to learn more about the University, our courses, entry requirements, scholarships and more.



✉ international@mmu.ac.uk
🔍 mmu.ac.uk/international

Follow the International Office



Facebook: [@MMUInternational](https://www.facebook.com/MMUInternational)



X (Twitter): [@manmetuni_int](https://twitter.com/manmetuni_int)



Instagram: [manmetuni_int](https://www.instagram.com/manmetuni_int)



MANCHESTER: CONNECTED TO THE WORLD

Manchester has an international reputation with the connections to match. Wherever you call home, you can make the journey to Manchester Met.

We are based in the heart of a well-connected city, with excellent transport links. The airport is around ten miles (16km) from the city centre with regular trains that stop a short walk from our campus. In around two hours, a train could take you to London, and with a network of buses and trams, the whole city and wider region is also easily accessible.



Travel times from Manchester*	
Vancouver	12 hours**
Istanbul	4 hours 30 min
Kuwait	6 hours 40 min
Islamabad	11 hours 30 min**
Dubai	7 hours 50 min
Jeddah	8 hours
New York	8 hours

Travel times from Manchester*	
New Delhi	11 hours 30 min**
Beijing	12 hours
Hong Kong	13-15 hours
Kuala Lumpur	15 hours 35 min**
Lagos	9 hours 30 min**
Mumbai	12 hours**
Johannesburg	13 hours 15 min**

* Approximate travel times are from the Manchester Airport website: manchesterairport.co.uk

** Via hub



Manchester Airport – a global gateway

Manchester Airport is the third busiest in the UK and is close to the University. It provides excellent access to daily flights to many European countries, key hubs for connecting flights, and worldwide destinations.

There is a direct rail link, which only takes around 30 minutes to get to and from the city centre. Find out more at manchesterairport.co.uk



Public transport

Because Manchester Met is so central, you are never far from a bus, tram or train route. Within a short walk from our campus, you could take your seat on a journey to anywhere across the country.

UK travel times

Selected travel times to Manchester are listed below.

Journey to Manchester	Train	Car
Liverpool	55 min	65 min
Leeds	70 min	75 min
Birmingham	110 min	110 min
London	140 min	250 min
Newcastle	180 min	180 min
Edinburgh	220 min	250 min





**Manchester
Metropolitan
University**

As a University committed to intentional inclusivity, we strive to make our content as accessible as possible. If you need information in a different accessible format like large print, or easy read please contact **international@mmu.ac.uk**

Manchester Metropolitan University
External Relations
International Office
6 Great Marlborough Street
Manchester
M1 5AL
United Kingdom

Contact our International Office:
international@mmu.ac.uk
mmu.ac.uk/international

Please note: This booklet is based on the information available at the time of publication in July 2024.

BAP-4883_CHD