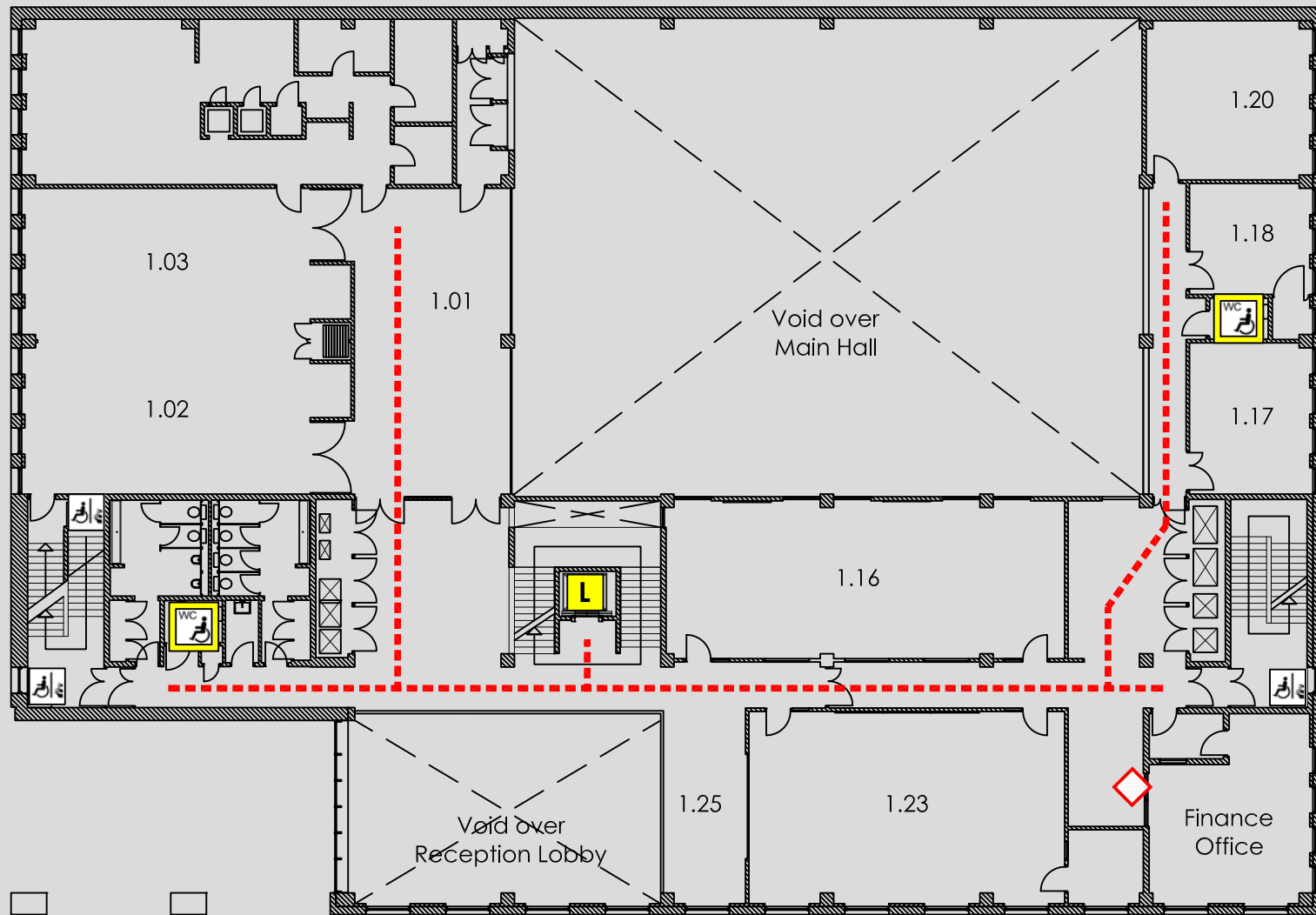


# ACCESS @ MMU

STUDENT UNION : FIRST FLOOR PLAN



The Union  
21 Higher Cambridge Street  
Manchester  
M15 6AD

Reception 0161 247 1162  
Security 0161 247 1334

**KEY**

- Accessible route
- Automatic door
- Door on hold open devices
- Push button power assisted door
- Accessible lift to all floors
- Accessible platform lift
- Accessible reception counter
- Hearing loop available
- Fully Accessible toilet
- Accessible toilet
- Accessible ramp
- Fire refuge space
- Emergency exit only
- Evacuation chair

Website <http://www2.mmu.ac.uk>

Main switchboard

0161 247 2000