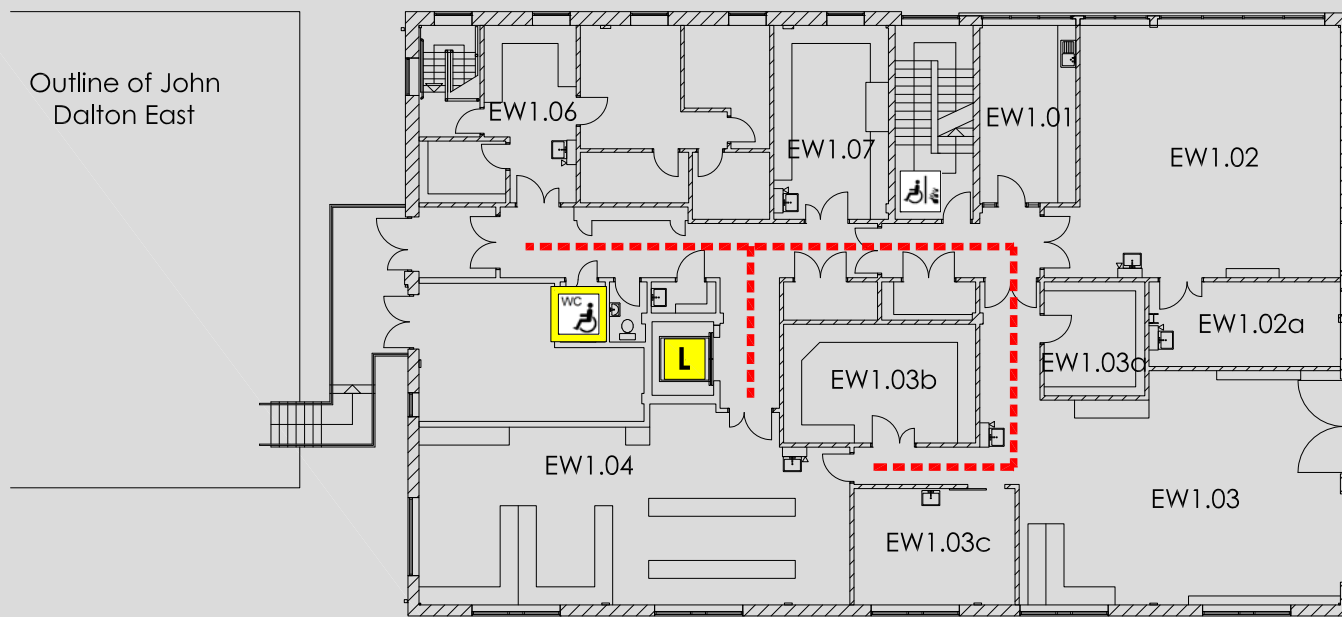


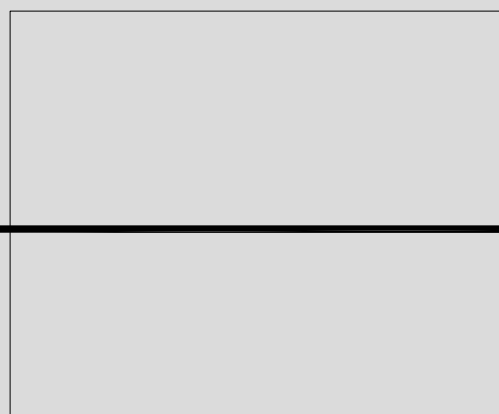
ACCESS @ MMU

JOHN DALTON HEAVY ENGINEERING : FIRST FLOOR PLAN



Outline of John Dalton East

John Dalton East, Central & Tower



John Dalton Heavy Engineering
 Chester Street
 Manchester
 M1 5GD

Reception 0161 247 1358
 Security 0161 247 1334

KEY

- Accessible route
-
- Automatic door
- Door on hold open devices
- Push button power assisted door
- Controlled access door
- Accessible lift
- Accessible reception counter
- Hearing loop available
- Fully Accessible toilet
- Accessible toilet
- Accessible ramp
- Fire refuge space
- Emergency exit only
- Evacuation chair

Website <http://www2.mmu.ac.uk>

Main switchboard

0161 247 2000