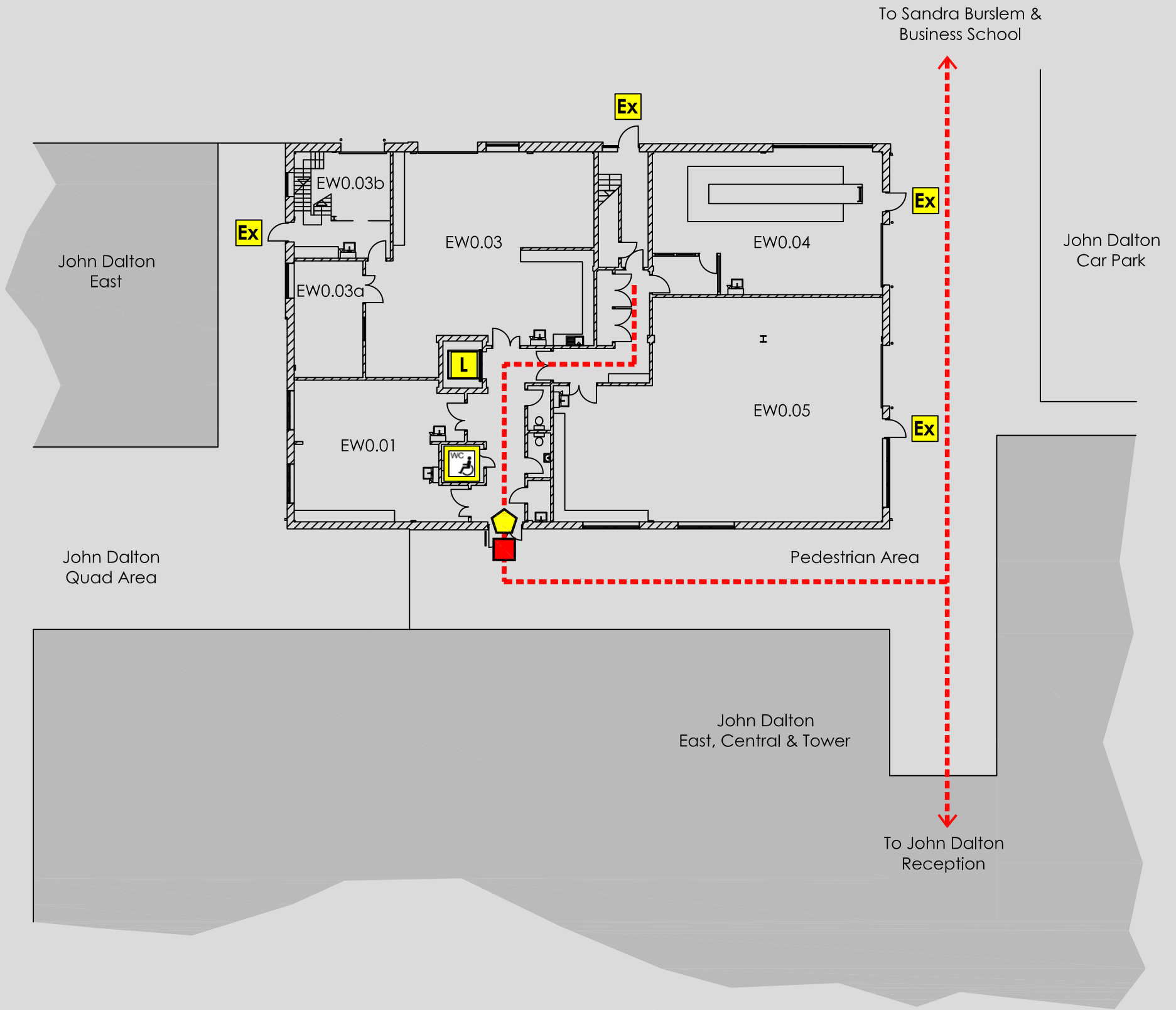


# ACCESS @ MMU

JOHN DALTON HEAVY ENGINEERING : GROUND FLOOR PLAN



John Dalton Heavy Engineering  
 Chester Street  
 Manchester  
 M1 5GD

Reception                      0161 247 1358  
 Security                         0161 247 1334

**KEY**

- Accessible route
- Automatic door
- Door on hold open devices
- Push button power assisted door
- Controlled access door
- Accessible lift
- Accessible reception counter
- Hearing loop available
- Fully Accessible toilet
- Accessible toilet
- Accessible ramp
- Fire refuge space
- Emergency exit only
- Evacuation chair

Website    <http://www2.mmu.ac.uk>

Main switchboard

0161 247 2000