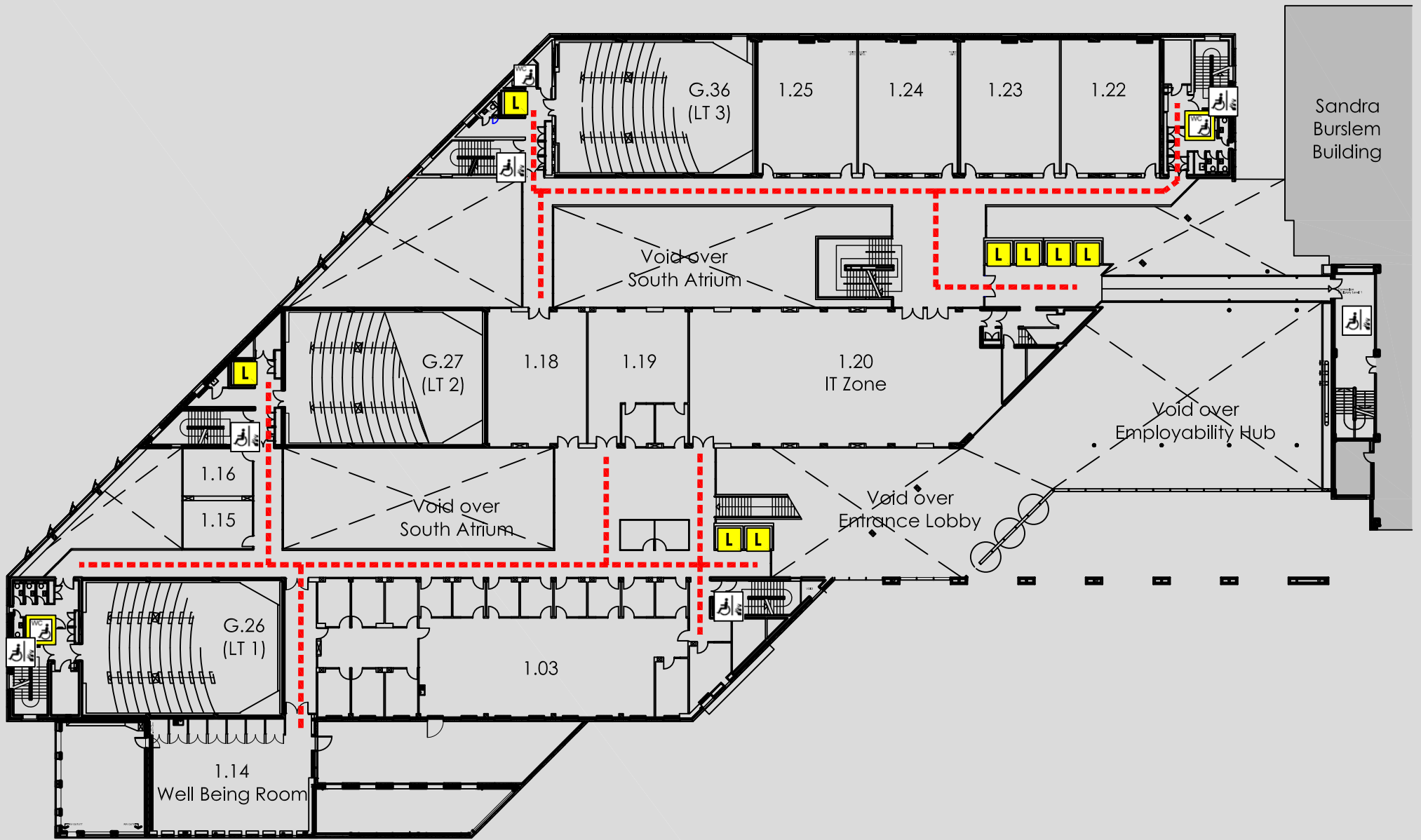


# ACCESS @ MMU

BUSINESS SCHOOL : FIRST FLOOR PLAN



Business School Building  
Oxford Road  
Manchester  
M15 6BH

Reception 0161 247 1362  
Security 0161 247 1334

**KEY**

- ⋯ Accessible route
- 
- ▲ Automatic door
- Door on hold open devices
- ⬠ Push button power assisted door
- L Accessible lift to all floors
- P Accessible platform lift
- ◊ Accessible reception counter
- Hearing loop available
- WC Fully Accessible toilet
- Accessible toilet
- Accessible ramp
- Fire refuge space
- Ex Emergency exit only
- Ec Evacuation chair

Website <http://www2.mmu.ac.uk>

Main switchboard

0161 247 2000